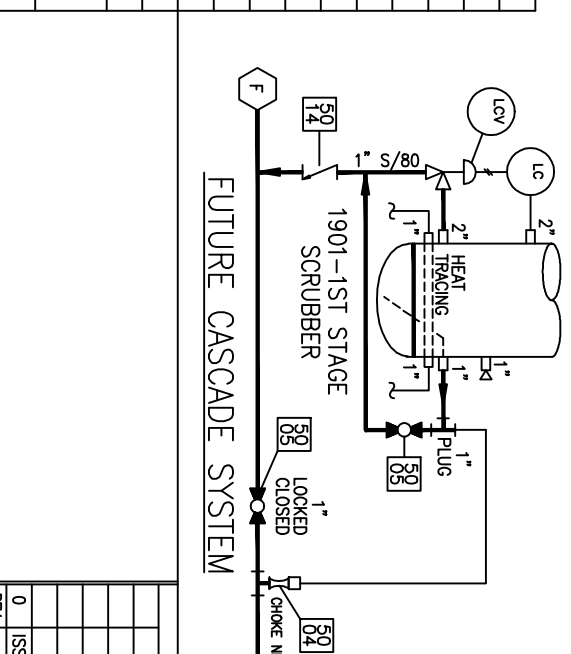


MARK	QUAN.	SIZE	RATING	TYPE	SERVICE
A	ONE	12"	300#	RFWN	UNIT INLET
B	ONE	4"	900#	RFWN	UNIT DISCHARGE
B2	ONE	3"	900#	RFWN	ALTERNATE DISCHARGE (BLINDED)
E	ONE	2"	2000#	FNPT	FUEL GAS INLET
F	ONE	1"	2000#	FNPT	SCRUBBER DRAIN HEADER
G	ONE	1"	2000#	FNPT	FUEL GAS FILTER DRAIN
H	ONE	2"	2000#	FNPT	ENGINE AND COMPRESSOR OIL DRAIN
J	ONE	1 1/2"	2000#	FNPT	EJW LOW POINT DRAIN / TAW DRAIN
L	ONE	1 1/2"	2000#	FNPT	PACKING VENT AND DIST. PIECE DRAINS
N	ONE	1"	2000#	FNPT	LUBE OIL MAKEUP COMPRESSOR
O	FOUR	2"	3000#	FNPT	SKID DRAIN BOXES
S	ONE	1"	2000#	FNPT	LUBE OIL MAKEUP ENGINE



REV	DESCRIPTION	CB	I.A.	BF	DATE
0	ISSUED FOR CONSTRUCTION				9-17-09

REV	DESCRIPTION	CB	I.A.	BF	DATE
1	ISSUED FOR CONSTRUCTION				9-17-09

REV	DESCRIPTION	CB	I.A.	BF	DATE
2	ISSUED FOR CONSTRUCTION				9-17-09

REV	DESCRIPTION	CB	I.A.	BF	DATE
3	ISSUED FOR CONSTRUCTION				9-17-09

REV	DESCRIPTION	CB	I.A.	BF	DATE
4	ISSUED FOR CONSTRUCTION				9-17-09

REV	DESCRIPTION	CB	I.A.	BF	DATE
5	ISSUED FOR CONSTRUCTION				9-17-09

REV	DESCRIPTION	CB	I.A.	BF	DATE
6	ISSUED FOR CONSTRUCTION				9-17-09

REV	DESCRIPTION	CB	I.A.	BF	DATE
7	ISSUED FOR CONSTRUCTION				9-17-09

REV	DESCRIPTION	CB	I.A.	BF	DATE
8	ISSUED FOR CONSTRUCTION				9-17-09

COMPRESSOR PROCESS
P & ID
CAT 3606 / ARIEL JGD-4
MIDCON
S.E.C. UNIT 2574, 2575

MAJOR EQUIPMENT
COMPRESSOR - ARIEL JGD-4
CYLINDERS - (2) 15 7/8" D" CYL (15.875" BORE)
(1) 11 1/4" D" CYL (11.00" BORE)
(1) 7 1/4" D" CYL (7.25" BORE)
ENGINE - CATERPILLER 3606
COUPLING - T.B. WOODS 750
COOLER - AIR-X-CHANGERS 156-EH
PANEL - ALTRONIC

Standard Equipment Company
Energy Products and Services Ltd
2574, 2575
M. REIDEN
12/11/05
SCALE: NONE
D

2574-100-01
1
3
0